

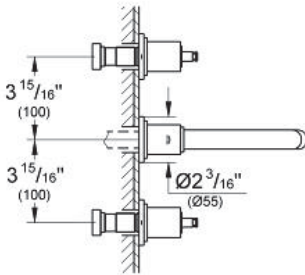
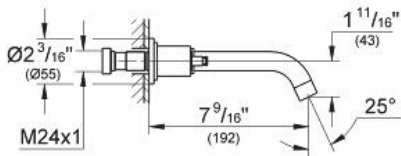
ATRIO  
Three-hole basin mixer  
M-Size

MODEL # 20173

GROHE America, Inc | 200 North Gary Avenue, Suite G, Roselle, IL 60172  
Phone: +1 (800) 444-7643 | Fax: +1 (800) 225-2778 | us-customerservice@grohe.com

Pure Freude an Wasser

GROHE



**Product Description:**  
Three-hole basin mixer  
M-Size

**Standard Specification:**

- Wall mount
- GROHE StarLight® finish
- GROHE WaterCare™
- Valves hot/cold with 1/2" cartridge (90°)
- 7 1/6" (180 mm) spout
- Center distance (7 7/8")
- Handles sold separately
- Requires Vessel Rough-In Valve 33885
- For vessel sink pop-up drain 28 754
- Max Flow Rate 1.5 gpm (5.7 L/min)
- Less handles – order (18 026) or (18 027)(sold separately)

**Applicable Codes & Standards:**

- Energy Policy Act of 1992
- NSF 61
- ASME A112.18.1/CSA B125.1
- US Federal and State material regulations
- EPA WaterSense®

**Color:**

- 20173 000 chrome
- 20173 ENA brushed nickel
- 20173 EN0 brushed nickel

ATRIO  
Handle Jota  
MODEL # 18027

*Pure Freude an Wasser*

**GROHE**

GROHE America, Inc | 200 North Gary Avenue, Suite G, Roselle, IL 60172  
Phone: +1 (800) 444-7643 | Fax: +1 (800) 225-2778 | us-customerservice@grohe.com



**ADA**

**Product Description:**  
Handle Jota

**Standard Specification:**

- GROHE StarLight® finish
- For Kitchen/Bar and Lavatories

**Applicable Codes & Standards:**

- Energy Policy Act of 1992
- ASME A112.18.1/CSA B125.1
- US Federal and State material regulations
- ICC/ANSI A117.1

**Color:**

- 18027 000 chrome
- 18027 AV0 sat.nick/silkmet
- 18027 BE0 sterling / brilliant nickel
- 18027 EN0 brushed nickel

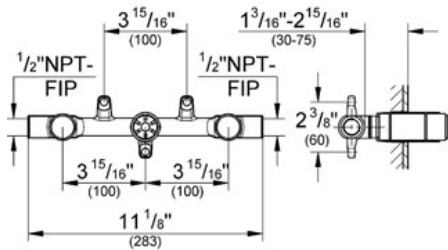
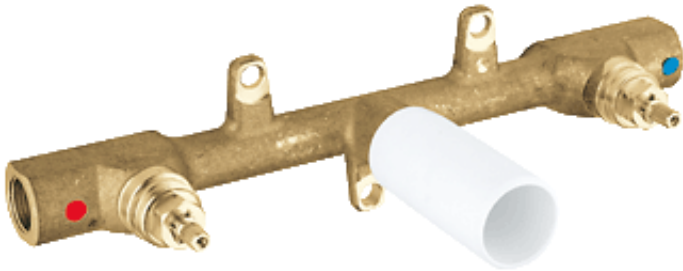
# Three-hole basin mixer

MODEL # 33885

Pure Freude an Wasser

GROHE

GROHE America, Inc | 200 North Gary Avenue, Suite G, Roselle, IL 60172  
Phone: +1 (800) 444-7643 | Fax: +1 (800) 225-2778 | us-customerservice@grohe.com



## Product Description:

Three-hole basin mixer

## Standard Specification:

- GROHE StarLight® finish
- Rough-in
- Wall installation
- GROHE SilkMove® ceramic cartridge
- 1/2" NPT Female Inlets
- 8" On-Center Rough-In Valve
- Case Brass Construction
- Max Flow Rate 2.2 gpm at 60 psi (8.3 L/min), 2.5 gpm at 80 psi (9.5 L/min)

## Applicable Codes & Standards:

- Energy Policy Act of 1992
- NSF 61
- ASME A112.18.1/CSA B125.1
- US Federal and State material regulations

## Color:

- 33885 000 chrome