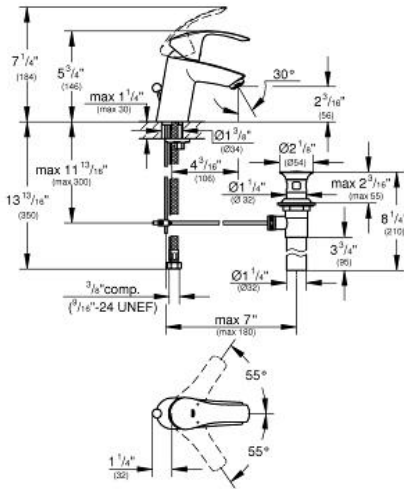


EUROSMART Lavatory Centerset S-Size

MODEL # 32642

GROHE America, Inc | 200 North Gary Avenue, Suite G, Roselle, IL 60172
Phone: +1 (800) 444-7643 | Fax: +1 (800) 225-2778 | us-customerservice@grohe.com

Pure Freude an Wasser



Product Description: Lavatory Centerset S-Size

Standard Specification:

- Single hole installation
- Metal lever
- GROHE SilkMove® ceramic cartridge
- GROHE StarLight® finish
- GROHE EcoJoy®
- Stainless Steel Braided Flexible Supplies
- GROHE QuickFix® rapid installation system

Applicable Codes & Standards:

- NSF 61
- ASME A112.18.1/CSA B125.1
- US Federal and State material regulations
- EPA WaterSense®
- ICC/ANSI A117.1

Color:

- 32642 002 chrome
- 32642 ENA brushed nickel
- 32642 EN2 brushed nickel

