



# ENGINEERING EXCELLENCE

## Motegi Series #4MT840

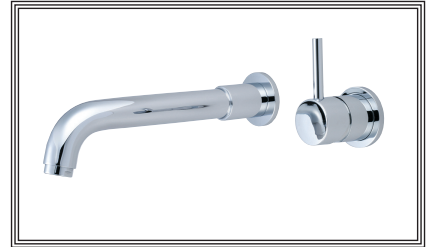
## SPECIFICATION SHEET

### DESCRIPTION

- Single Handle Wall Mount Roman Tub Set
- Metal Lever Handle
- Rigid Bent Nose Spout
- 10" Reach
- Ceramic Disc Cartridge with Temperature Limit Stop
- 2-Hole 4" Installation
- Includes Valve With Mounting Plate

### FINISHES

- PC PVD Polished Chrome
- BN PVD Brushed Nickel
- SS PVD Stainless Steel
- PN PVD Polished Nickel
- PB PVD Polished Brass



### Note:-

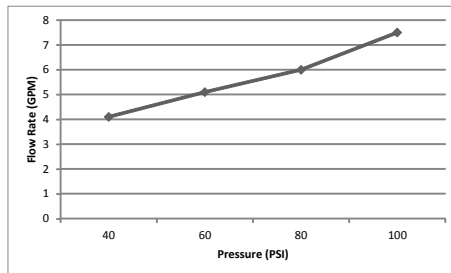
Rough-in valve included.

#4MT840 SHOWN \* ADA 

### STANDARDS APPLICABLE

- ASME A112.18.1
- ANSI A117.1
- CUPC / IAPMO LISTED / ADA COMPLIANT

**4MT840 Flow Rate (GPM) Vs Pressure (PSI)\***



Model #: \_\_\_\_\_

Specific Features: \_\_\_\_\_

Project Name: \_\_\_\_\_

Submitted For: \_\_\_\_\_

\*Note:- This information is provided for reference only. Actual Flow Rate may vary depending on installation and inlet pressures.

Model	Description	Finishes
#4MT840	Single Handle Wall Mount Roman Tub Set	<input type="checkbox"/> PC <input type="checkbox"/> Other_____



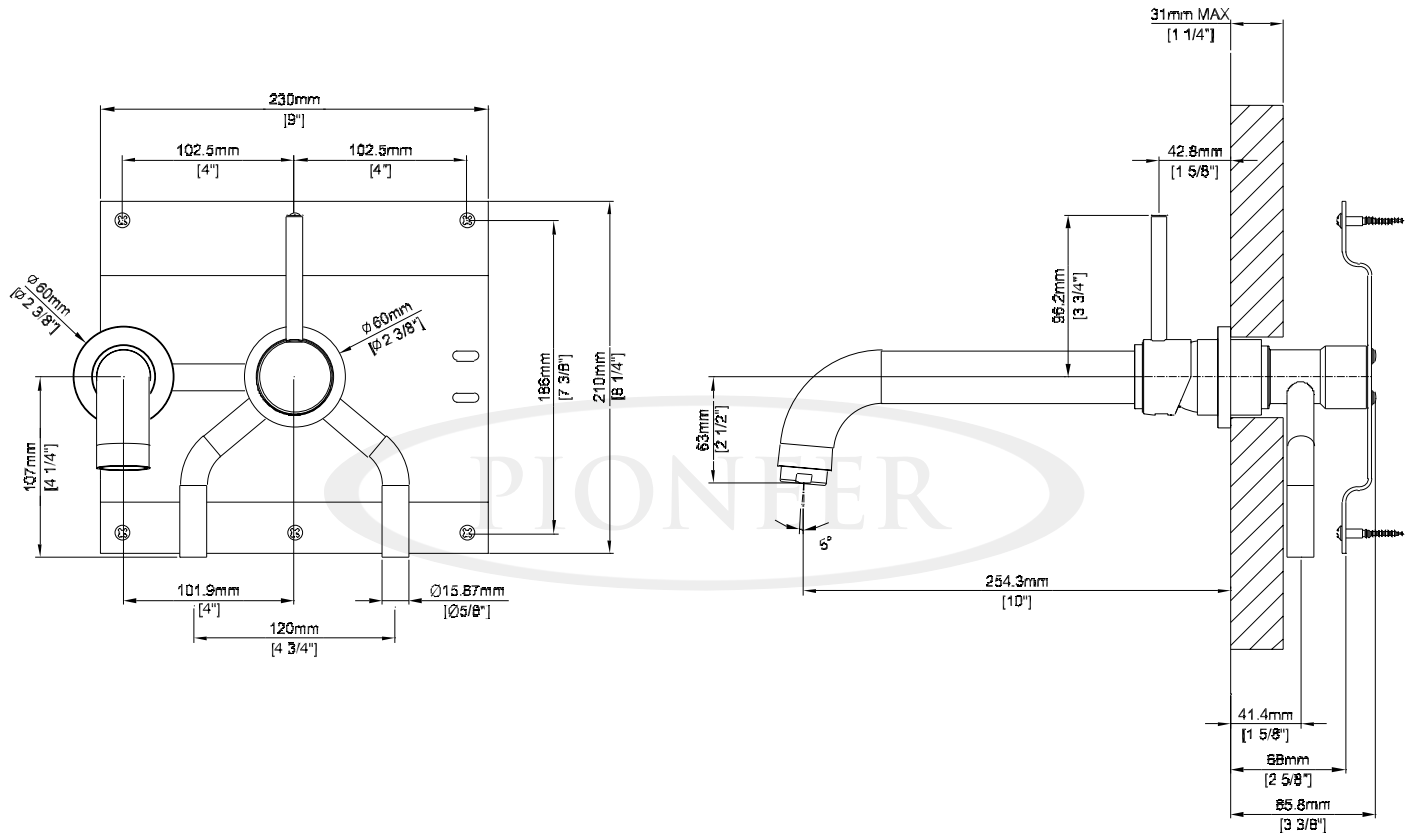
ENGINEERING EXCELLENCE

Pioneer:1-800-338-9468  
Commerce, CA 90040  
www.pioneerind.com  
Pioneer Industries, Inc. © 2013

DMSP4MT840/REV. 12 2012  
Page 1 of 2

**Installation Note:**

Please refer to Installation Guide For this Product.



**Product Diagram**



ENGINEERING EXCELLENCE

Pioneer: 1-800-338-9468

Commerce, CA 90040

www.pioneerind.com

Pioneer Industries, Inc. © 2013